

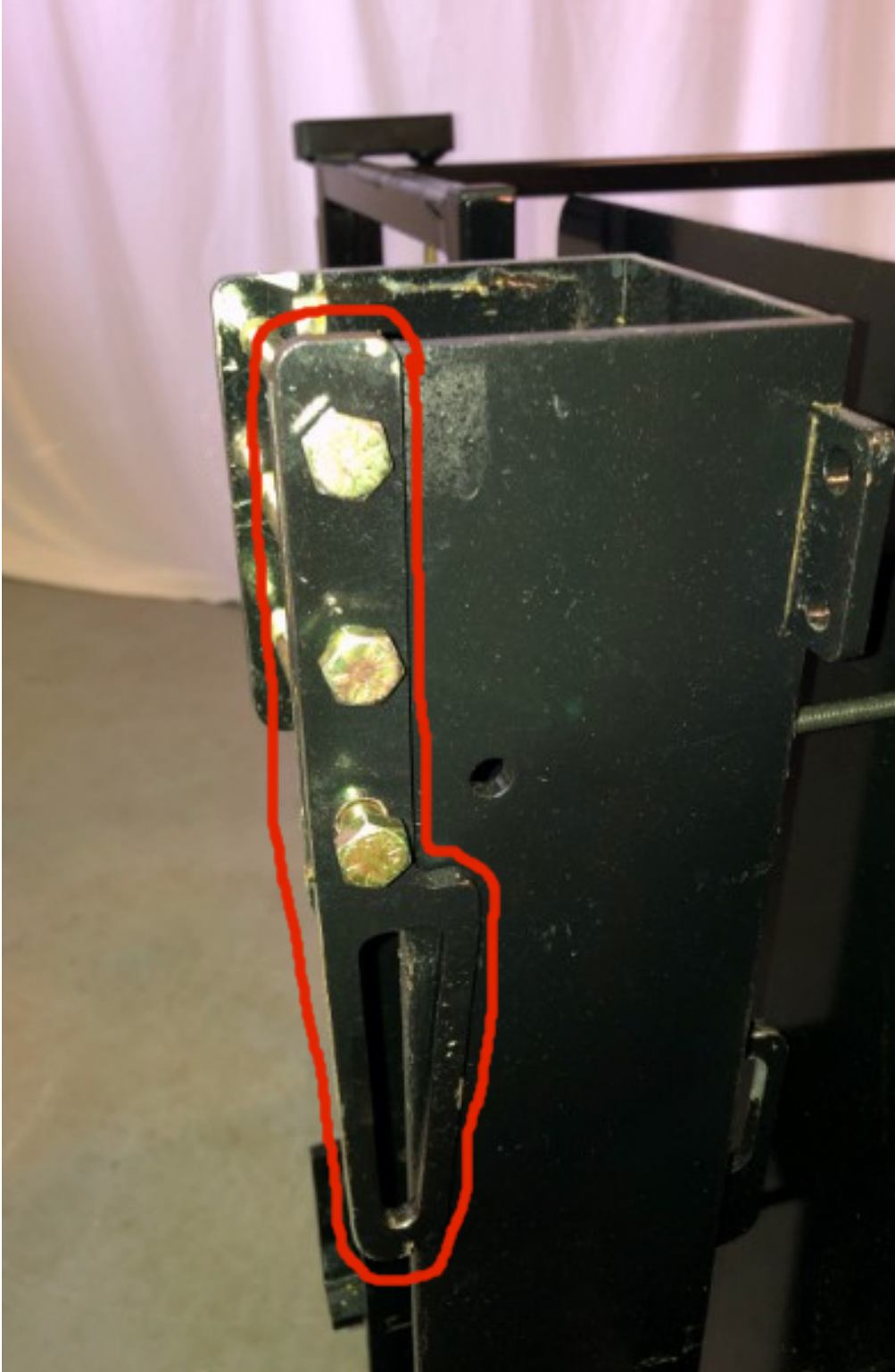
Installing the KCSPM3648 Upper Limit Switch

5/05/2020

1. The purpose of this document is to show you how to properly install the KCSPM3648 Upper Limit Switch
2. This is what the new (4/1/2020) version of the upper limit switch looks like. Note the $\frac{1}{8}$ " allen wrench taped to the back.



3. The “flag” that will trigger the Upper Limit Switch is often shipped installed but upside down on the collar.



4. Here is the “flag” properly installed for use and bolted onto the upper left rear corner of the platform’s collar. It will trigger the switch as the platform moves up.



5. Different lifts have different Upper limit Switches and different Safety Guards.

6. This new Upper Limit Switch replaces and removes any need for these parts:



7. You will need a $\frac{1}{8}$ " allen wrench, which is conveniently supplied and taped to the back of the switch, as in the first photo above. When you are done with the installation please return the allen wrench to this location for future use.
8. Depending on your configuration you may need to temporarily remove the Safety Shield to install this switch.

Installation Steps:

9. Bolt the "flag" onto the upper left rear corner of the platform's collar as shown above.
10. Raise the platform to where you want it to actually stop.
11. Slide the Upper Limit Switch onto the left side of the column as shown below, with the switch's electrical cable coming out from the lower side of the switch. Slide the switch downward until the end of the plunger contacts the flag sticking up from the collar. Slide it a little further until you hear the switch click as it comes in contact with the flag, and stop.



12. Use the $\frac{1}{8}$ " allen wrench to tighten one of the two set screws.



13. Use the controller to move the platform down and up to see if the platform stops at the correct height for your landing. As needed, adjust the height setting at which your lift platform stops by loosening the set screw, sliding the Upper Limit Switch up or down and retightening the screw. Repeat until the height is as desired.
14. When the platform stops at the desired height, tighten both set screws.
15. Place the allen wrench back into its storage tape,
16. If necessary, re-attach the Safety Shield.